

Last Update: 10 July 2025

# **Guidelines to understand if and when adhesive tapes and films are considered packaging, and which categories under the PPWR they must comply with**

## **Disclaimer**

This document was prepared by Afera Members and staff based on discussions among Members and publicly available information.

Afera has made reasonable efforts to ensure the accuracy and reliability of the information stated in this document; however, the information is provided on an "as is" basis without a warranty of any kind. Afera does not accept any responsibility or liability for the accuracy, content, completeness, legality or reliability of the information contained. We believe that the information might be of use to the readership, but it is not intended to substitute for professional legal advice combined with due diligence to ensure compliance with your individual situation.

We invite Afera Members to contribute to this document by providing comments, corrections and/or examples by contacting us at [afsp@afera.com](mailto:afsp@afera.com).

## **Scope**

This document aims to help Afera Members to understand the requirements the PPWR imposes on their products. It includes two decision trees to understand which requirements that a product needs to comply with, whether the product is used in a packaging application or in general for all products independently of its application.

## **Target audience**

This document is targeted to manufacturers and converters of adhesive tapes and films.

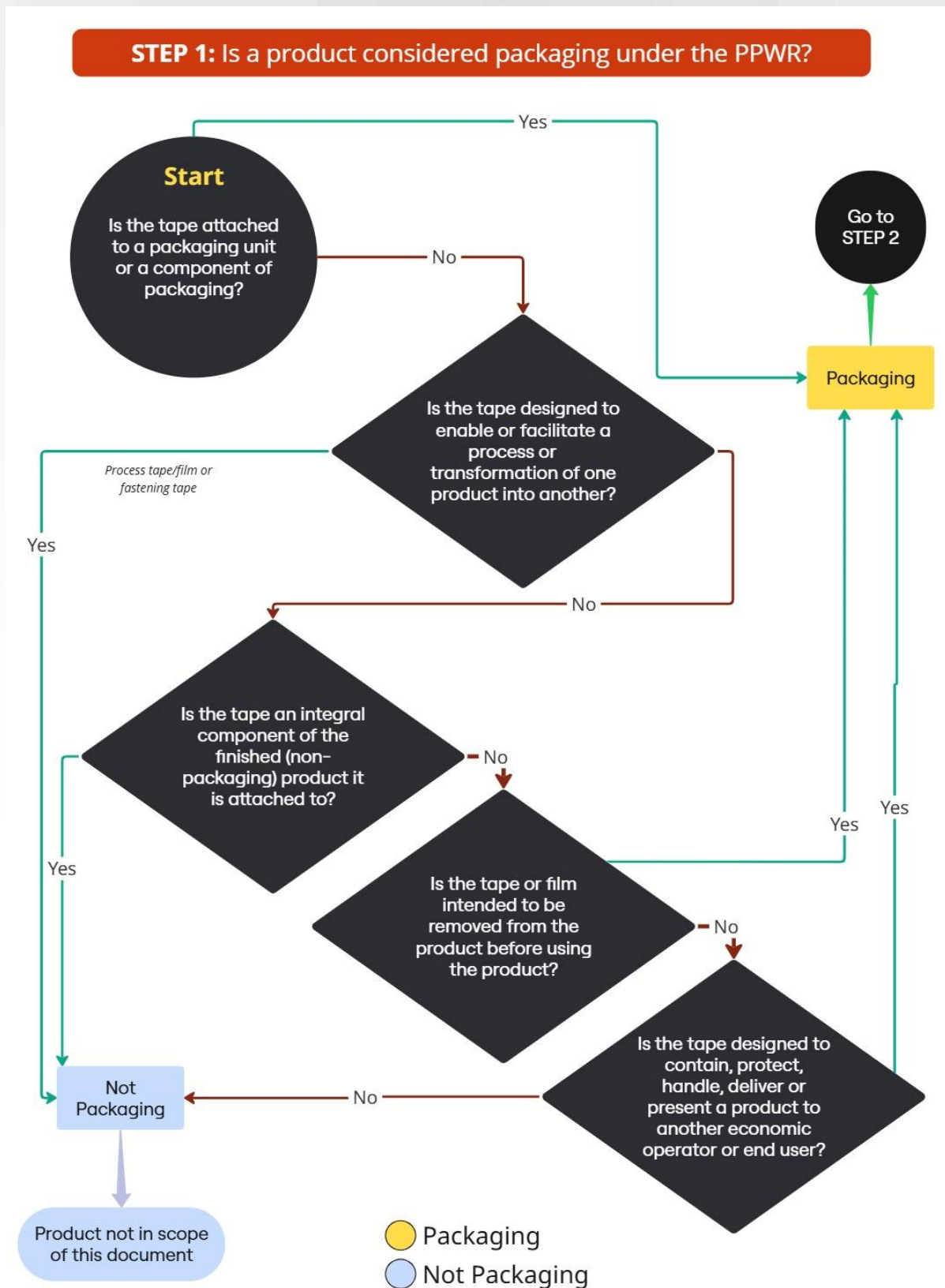
## **Decision trees**

### **Application of a tape or film as packaging**

This decision tree helps understand if a product is packaging or not, and what type of packaging it is. At the end of the decision tree, the reader will know, for a packaging product, what recycling stream would need to be assessed for DfR requirements.

## STEP 1: Is a product considered packaging under the PPWR?

For full details, we refer readers to [Afera's position on tapes under PPWR](#).



Click [here](#) for an online view.

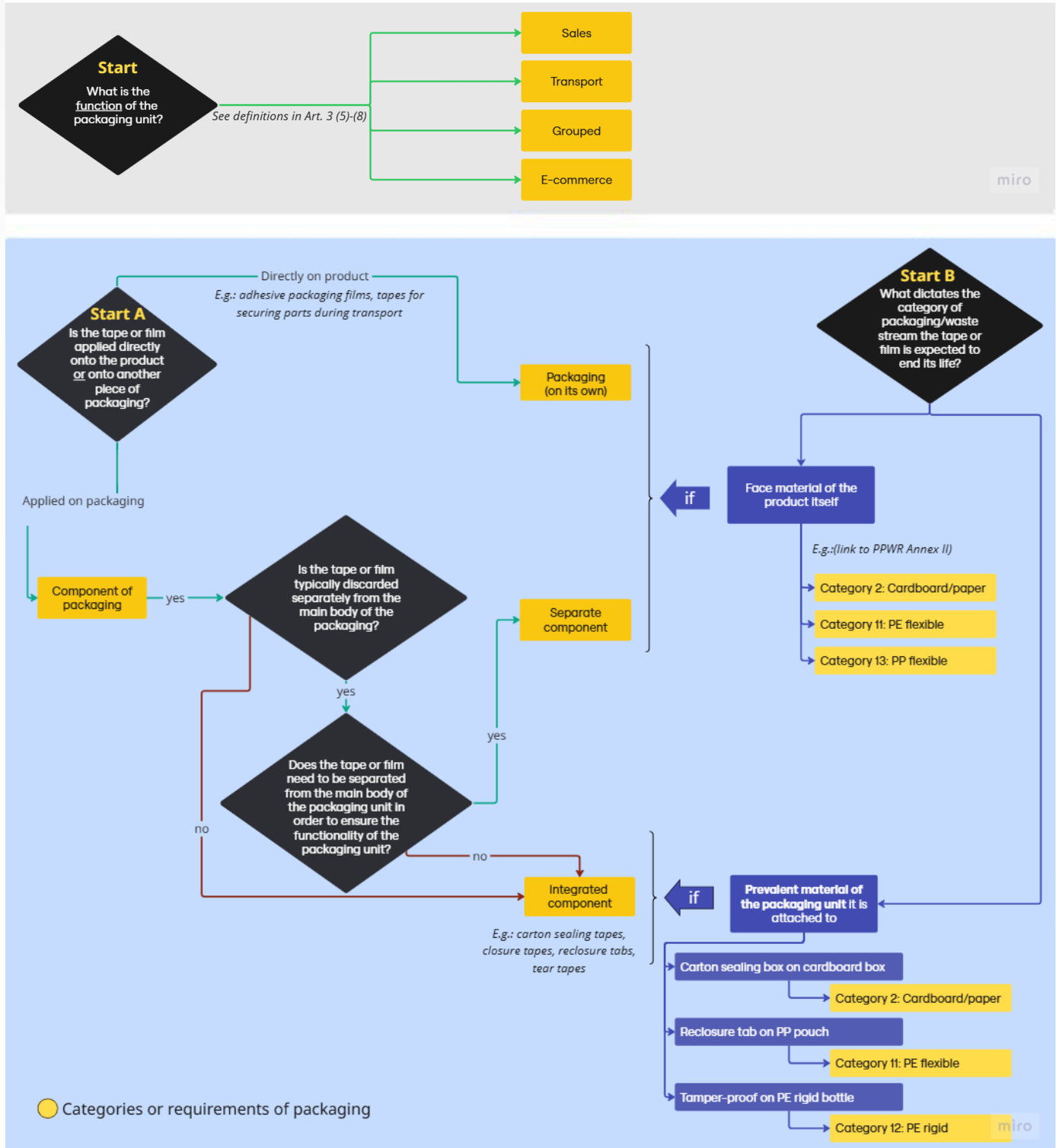
## STEP 2: What categories of requirements under the PPWR should the product comply with?

### STEP 2: What categories of requirements under the PPWR should the product comply with?

The decision trees below (indicated by a colour shade) are independent of each other.

The grey decision tree indicates the function(s) of the packaging unit the product is incorporated into.

The purple decision tree indicates (Start A) if the specific product is packaging on its own or a component of packaging, and (Start B) what material category of DfR guidelines the product needs to comply with.



Click [here](#) for an online view.